

# BRIDGEPORT



**UPGRADE**  
*to our*  
**Premier Living  
Package**

## Included Features

*Exclusively Available by Development*

- 2,404 Sq Ft
- 2 Bedroom (optional 3rd) • 2.5 Bath
- Brick & Stucco Exterior
- 30 Year Architectural Shingles
- 2 Car Garage with Golf Cart Garage
- Covered Patio with Atrium Door
- Full Landscaping, Sprinklers & Backyard Fence
- Air Conditioning
- Energy Efficient Home
- Low 'E' Windows
- Gas Fire Place
- Knotty Alder Cabinets with 3" Crown
- Walk-in Pantry
- Granite in Kitchen & Laundry
- Piedrafina Vanities & Surrounds
- Tile & Carpet
- 40 Gallon Water Heater

## VIP Package

*Savings of \$750*

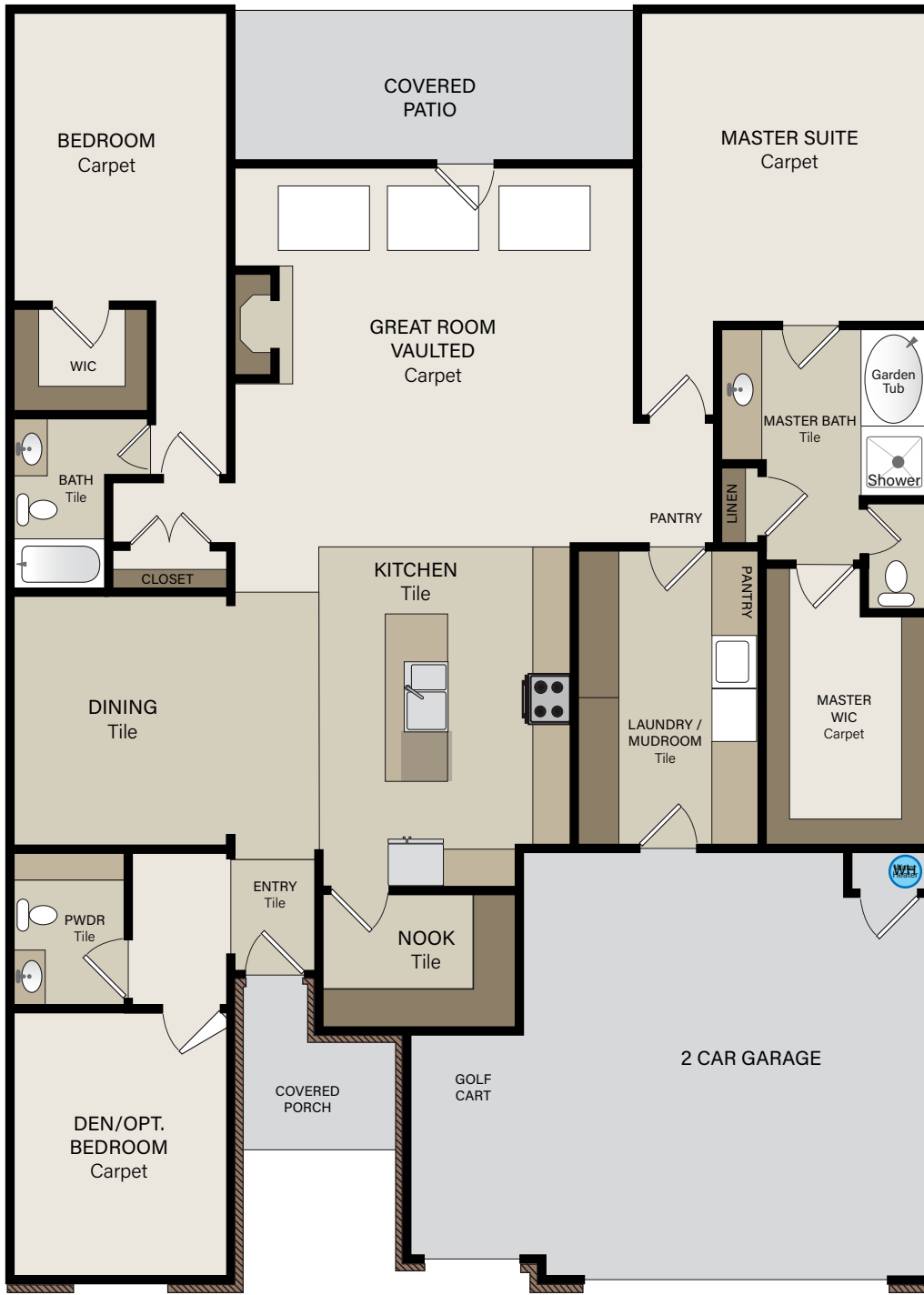
Call for details about our Accessibility and Craftman Upgrade Packages.

- Group 2 Granite
- Level B Carpet
- Level C Tile
- Two Tone Paint
- 9/16 " Premium Carpet Pad with moisture barrier

**OvationHomesUtah.com**  
**801-444-3639**

# BRIDGEPORT

2,404 SQ FT | 2 BED 2.5 BATH | 2 CAR GARAGE + GOLF CART GARAGE



Option A: 2,404 sq ft.

Option B: 2313 sq ft.